



Disaster Risk Reduction and Recovery in the Philippines

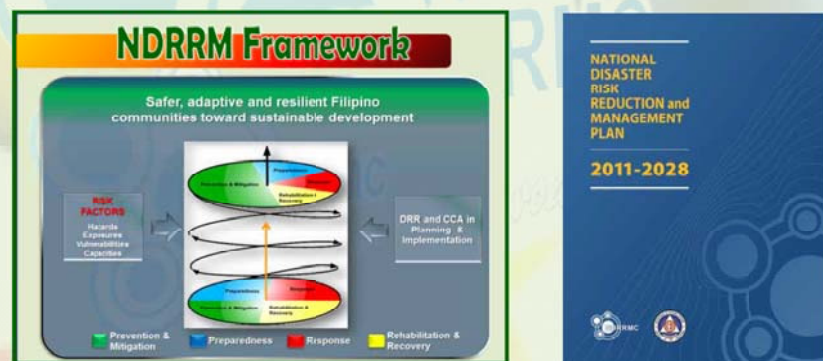
*International Recovery Forum
Kobe, Japan
21 January 2014*

Director Romeo F. Fajardo
Civil Defense Deputy Administrator

Scope of Presentation

- Philippine DRRM System
- Typhoon "YOLANDA" (HAIYAN)
- Recovery & Rehabilitation

Philippine Disaster Risk Reduction & Management System



Philippine DRRM System

Republic Act 10121

- Strengthens the Philippine Disaster Risk Reduction & Management System



Disaster Relief & Response

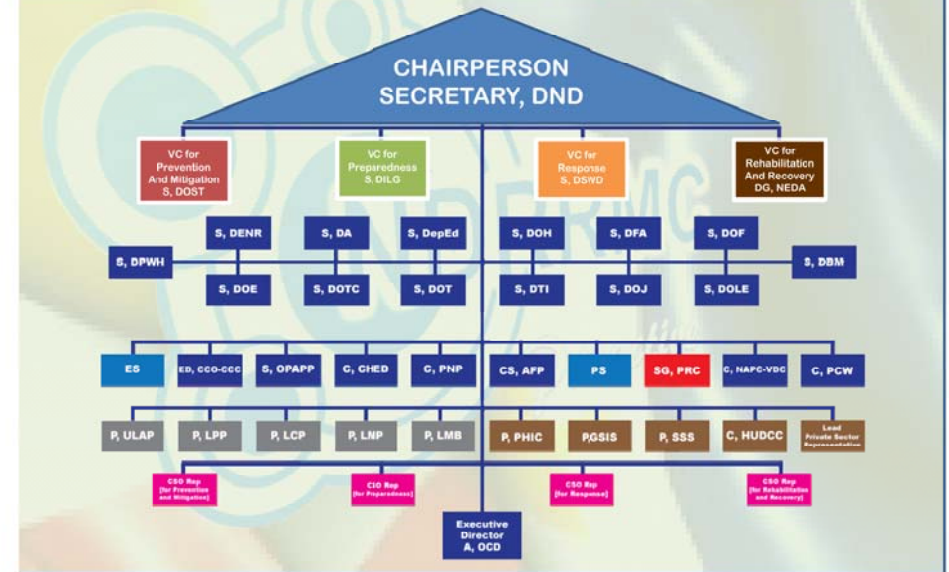


Disaster Risk Reduction

DRRM Councils



NDRRM Council Members

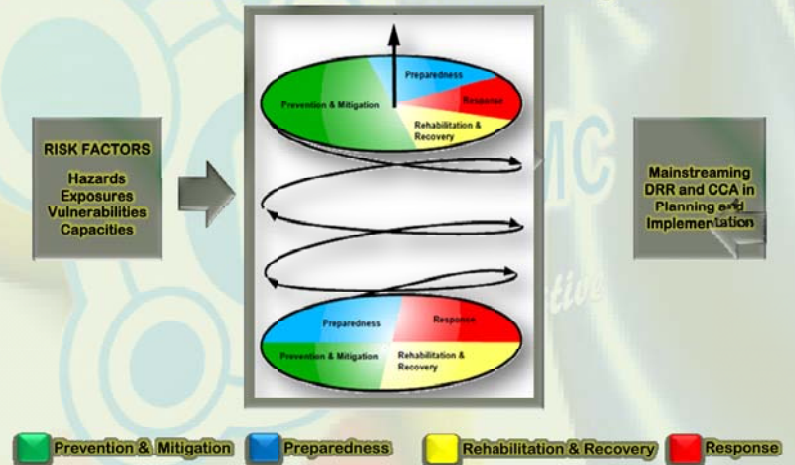


Thematic Areas



NDRRM Framework

Safer, adaptive and resilient Filipino communities toward sustainable development



The NDRRM Plan, 2011-2028

Provides for:

- identification of hazards, vulnerabilities & risks
- disaster risk reduction & management approaches and strategies
- agency roles, responsibilities & lines of authority
- vertical and horizontal coordination of disaster risk reduction & management

Disaster Rehabilitation & Recovery

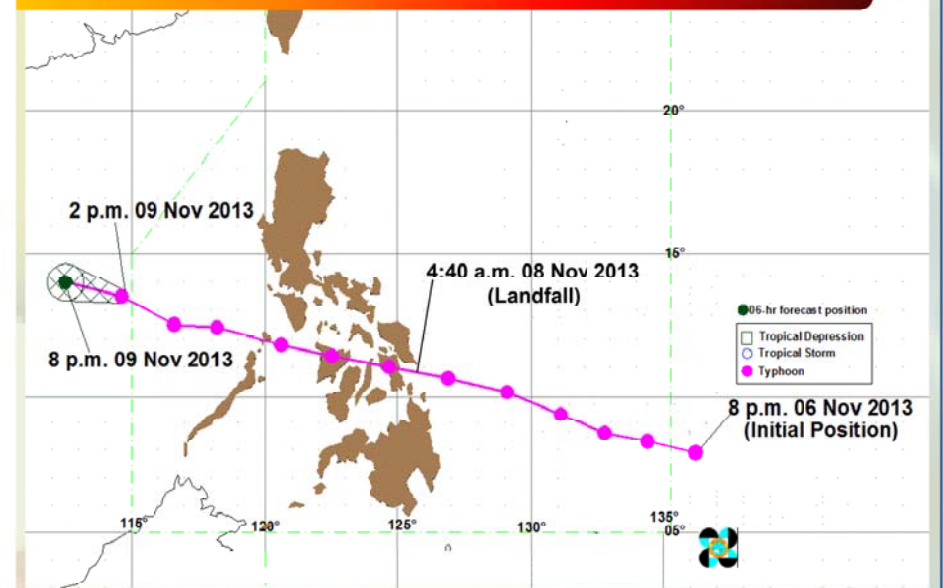
Goal:

to restore and improve the facilities, livelihood, living conditions and organizational capacities of the affected communities, and reduce disaster risks in accordance with the “build back better” principle

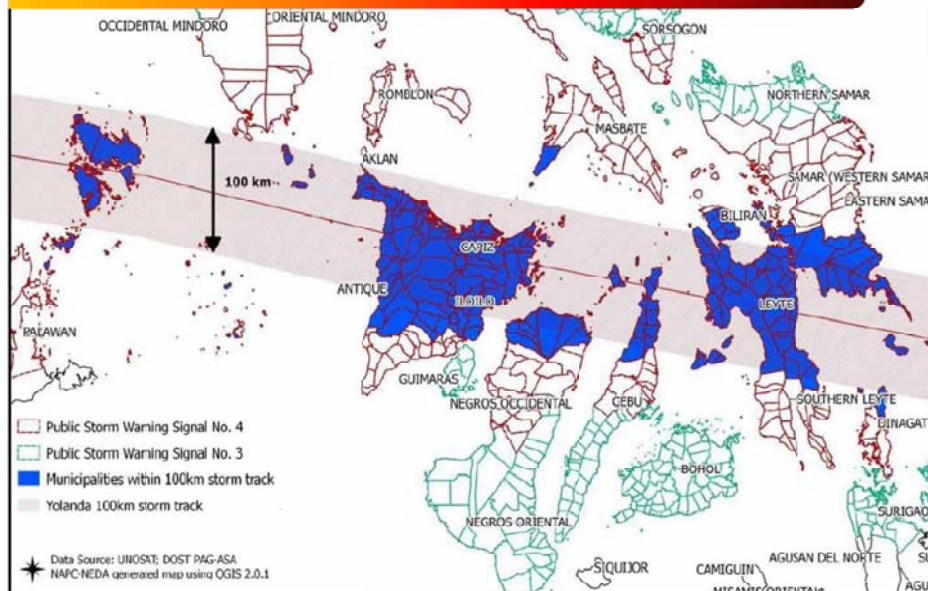
TY “YOLANDA” (HAIYAN)



TY “YOLANDA” Track



100 KM Radius, TY "YOLANDA"



Effects

as of 17 January 2014, 6:00am

Affected Population	
<i>Families</i>	3,424,593
<i>Persons</i>	16,078,181
Casualties	
<i>Dead</i>	6,201
<i>Injured</i>	28,626
<i>Missing</i>	1,785
Damaged Houses	1,140,332
<i>Totally</i>	550,928
<i>Partially</i>	589,404

Effects

- 275 kph winds caused heavy damages
- Storm surge in Samar and Leyte caused a great number of deaths
- Local government units were unable to discharge their functions, being victims themselves
- Huge damages to lifelines – power, water supply, communications and transportation
- Paralyzed industry, trade and services in affected areas

Lessons Learned

- Strict implementation of Comprehensive Land Use Plan
- Total Pre-Emptive Evacuation
- Establishment of evacuation centers resilient to all hazards
- Enhancement of emergency telecoms
- Organization and prepositioning of trained national responders
- Strengthening of Public-Private Partnership to ensure multi-stakeholder participation in DRRM efforts

TY "YOLANDA" Recovery & Rehabilitation



Reconstruction Assistance for TY "YOLANDA" affected areas (RAY)

Strategic Plan to
guide the recovery &
reconstruction of
the economy, lives &
livelihood



Reconstruction Assistance for TY "YOLANDA" affected areas (RAY)

- Initial recovery & rehab efforts
- PDNA results will finalize Rehab Plan



Economic Indicators for TY "YOLANDA" Affected Regions, 2012

Region	GRDP/GDP (PHP Billion) at 2012 Current Prices	Share to GDP (percent)	Sector Share to National Output		
			Agriculture	Industry	Services
IV-B - MIMAROPA	180.20	1.70	3.60	2.00	1.20
V - Bicol	216.90	2.10	4.20	1.50	1.90
VI - Western Visayas	421.70	4.00	8.70	2.30	3.90
VII - Central Visayas	666.20	6.30	4.00	7.20	6.30
VIII - Eastern Visayas	228.20	2.20	4.00	2.70	1.50
XIII - CARAGA	122.50	1.20	2.30	1.20	1.00
Total of 6 regions	1,835.70	17.40	26.80	16.70	15.80
Philippines	10,564.90	100.00	100.00	100.00	100.00
Total (US\$ Billion)	237.68				

Preliminary Damage and Loss Assessment

Sector	Damage and Loss (PhP Million)				Total
	Damage		Loss		
	Public	Private	Public	Private	
Infrastructure Sectors	16,024.30	4,285.00	7,108.40	6,565.40	33,983.00
Electricity	5,329.30	1,500.00	4,575.20	4,126.40	15,530.90
Roads, bridges, flood control and public	4,255.20	-	322.90	-	4,578.10
Transport	6,010.80	216.00	2430	-	6,251.10
Water and sanitation	429.00	2,569.00	2,186.00	2,439.00	7,623.00
Economic Sectors	3,743.50	67,560.00	8700	106,716.60	178,107.10
Agriculture	3,743.50	27,560.00	8700	30,716.60	62,107.10
Industry, Services	-	40,000.00	-	76,000.00	116,000.00
Social Sectors	23,175.30	305,472.10	3,442.30	22,628.80	354,718.50
Education	17,953.50	3,726.20	1,303.90	916.30	23,899.90
Health	1,170.80	1,959.90	1,932.40	510.50	5,573.60
Housing	4,051.00	299,786.00	206.00	21,202.00	325,245.00
Cross-sectoral	4,000.00	-	30000	-	4,300.00
Local Government	4,000.00	-	30000	-	4,300.00
Total (PhP Million)	46,943.00	377,317.10	10,937.10	135,910.80	571,108.50
Total (US\$ Million)	1,063.60	8,549.20	247.80	3,079.40	12,940.00

Note: Data from some sectors are incomplete due to ongoing field assessments. These are indicated in the sectoral sub-sections.

Estimated Recovery and Reconstruction Needs

Sector	Needs (PhP Million)		
	Recovery	Reconstruction	Total
Infrastructure Sectors	3,654.90	24,670.90	28,325.80
Electricity	1,740.30	8,195.20	9,935.50
Roads, bridges, flood control and public buildings	64.60	5,106.20	5,170.80
Transport	-	7,472.10	7,472.10
Water and sanitation	1,850.00	3,897.40	5,747.40
Economic Sectors	38,201.80	51,278.40	89,480.20
Agriculture	15,401.80	3,278.40	18,680.20
Industry, Services	22,800.00	48,000.00	70,800.00
Social Sectors	-	220,388.90	220,388.90
Education	-	30,351.60	30,351.60
Health	-	6,887.40	6,887.40
Housing	-	183,149.90	183,149.90
Cross-sectoral	18,700.00	4,000.00	22,700.00
Local Government	300.00	4,000.00	4,300.00
Social Protection	18,400.00	-	18,400.00
Total (PhP Million)	60,556.70	300,338.20	360,894.90
Total (US\$ Million)	1,372.10	6,805.00	8,177.10

Economic Impact

- May reduce the economic growth rate by -0.3 percentage point in 2013 & by another -0.3 percentage point in 2014
- Create pressure on fiscal policy:
 1. the nat'l gov't has to provide add'l funding & reallocate manpower to support emergency relief efforts
 2. the recovery and reconstruction is expected to impact on the fiscal deficit in the next two or three years
- 1.9% increase in poverty incidence - ADB

Partnering with the Private Sector

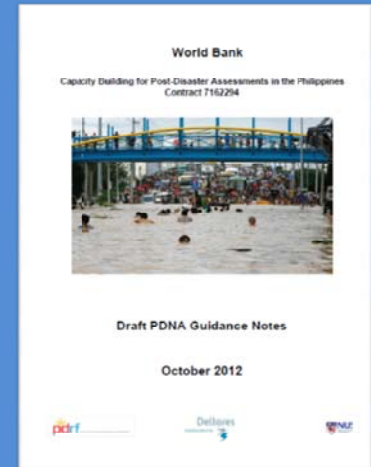
- Options for greater private sector involvement :
 - expansion of public-private partnership arrangements for major investment programs
 - streamlining processes to accelerate the issuance of licenses to operate new businesses, especially those that help re-establish critical supply chains
 - facilitating bulk purchase arrangements from the private sector for goods
 - fostering business-community links through adopt-a-town partnerships

Post-Disaster Needs Assessment (PDNA)



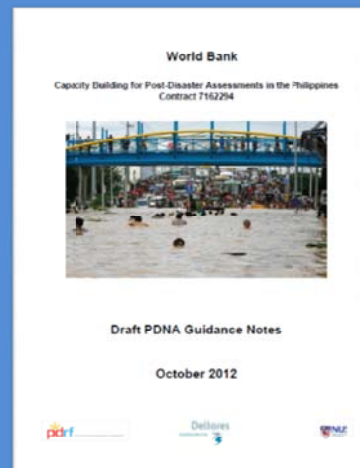
PDNA

- PDNA is a multi-sectoral & multi-disciplinary structured approach for assessing disaster impacts & prioritizing recovery & reconstruction needs
- Covers Damage & Loss Assessment (DaLA) & Human Recovery Needs Assessment (HRNA) which includes a recovery & reconstruction framework



PDNA

- Developed by the United Nations Economic Commission for Latin America & the Caribbean (UN-ECLAC, 2003)
- Further refined, expanded, operationalized & documented in the Guidelines for Damage, Loss & Needs Assessment (GFDRR, 2010)

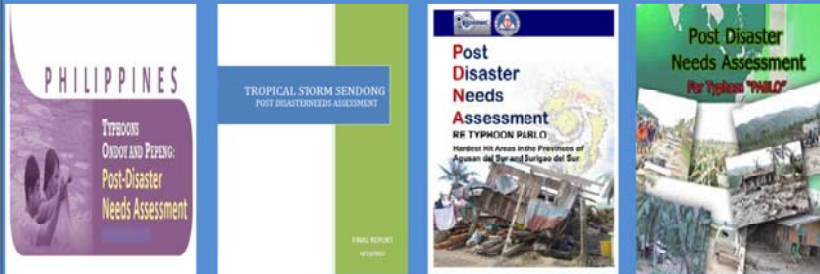


PDNA

- Republic Act No. 10121
 - Section 9 (m) – Conduct early recovery and post-disaster needs assessment institutionalizing gender analysis as part of it
- DRRM Framework
 - Key Result Area of DANA as a generic activity
- National DRRM Plan
 - Thematic Area of Rehabilitation; Outcome 20 - OCD to lead the conduct of the PDNA

PDNA

- 5th conduct of PDNA for the Philippines
- Previously PDNAs were for TY “ONDOY” & TY “PEPENG”, TS “SENDONG”, TY “PABLO” & the Zamboanga Crisis



PDNA

- Philippine Government currently undertaking the PDNA for TY “YOLANDA”
- Indigenized in the Philippine setting to adapt to peculiar needs
- Five broad sectors:
 1. Infrastructure
 2. Livelihood
 3. Social
 4. Resettlement
 5. Cross-Sectoral
- Will be the basis for Philippine Recovery & Rehabilitation Plan

Comparative Sectors

Cluster Approach (NDCC MO # 12)	TS Sendong (2011)	TY Pablo (2013)	Zamboanga City Crisis (PCNA-2013)	TY Yolanda (Initial based on Early Recovery)	TY Yolanda (Agreed)
Food & NFIs (DSWD)	Infrastructure	Infrastructure (DPWH)	Infrastructure	Food and Water (Relief) -DSWD	Infra (DPWH)
Camp/IDP Mgmt, Emergency Shelter & Protection (DSWD)	Social	Social (DSWD)	Social	Livelihood, Employment and Commerce (DOLE, DTI, DA)	Social (DSWD)
Perm Shelter & Livelihood (DSWD)	Productive	Livelihood (DTI)	Productive	Shelter & Reconstruction (DPWH & DSWD)	Livelihood
WASH, Health, Nutrition & Psychosocial Svcs (DSWD)	Cross-Sectoral	Resettlement (DILG)	Cross-Sectoral	Social Services (Health and Education)	Resettlement (DILG)
Logistics & Emergency Telecoms (OCD)		Support Cluster (DBM)	Peace Conflict Impact Assessment	Peace and Order (DILG)	Cross-Sectoral
Agriculture (DA)					
Early Recovery (OCD)					

TY “YOLANDA” PDNA Sectors and its Components

