



SERBIA

Total population: 7,186,862

Area: 88,361 km²

Capital: Belgrade



*International Recovery Forum 2019
Attaining the Build Back Better Dividend
18 January 2019
Kobe, Japan*



May 2014



May 2014



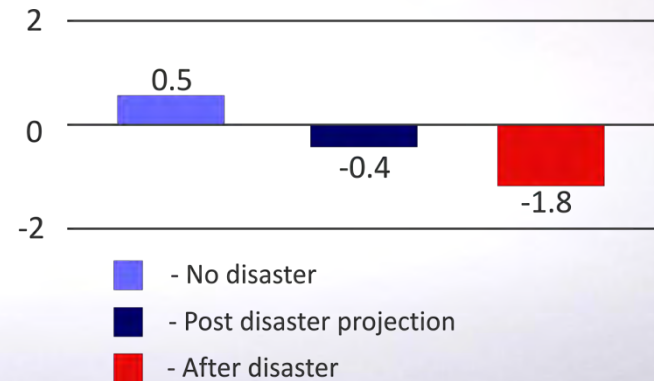
May 2014



Floods 2014

- Floods affected **119 municipalities** (out of 165)
- **22% of total population** affected by floods
- **More than 30 municipalities** sustained extensive damage
- **57 lives** were lost
- **32,000 families** were forced out of their homes
- Production of electricity decreased by 25%, due to the flooding of an open-pit coal mine, a key source of lignite-based power generation
- The disaster caused a **recession** in the Serbian economy
- Serbian **economy contracted by 1.8%** in 2014, instead of growing by 0.5% as was previously projected

**IMPACT OF
DISASTER ON
SERBIA GDP
GROWTH RATE
IN 2014**





Facts About the Consequences

- Total estimated damages exceed **EUR 1 billion**
- Total disaster effects (including losses) **4.8% of GDP (EUR 1.7 billion)**
- Total needs for recovery and reconstruction are estimated at **EUR 1.35 billion**
- Estimates are based on the **Post Disaster Needs Assessment** implemented by the Government of Serbia with the assistance of the WB, UN and EU

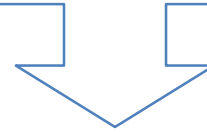




Government Response

No adequate system was in place to respond to overwhelming needs in a coordinated fashion

Office for Reconstruction and Flood Relief was established in the midst of floods as an **operative (not political) national authority** for relief and recovery



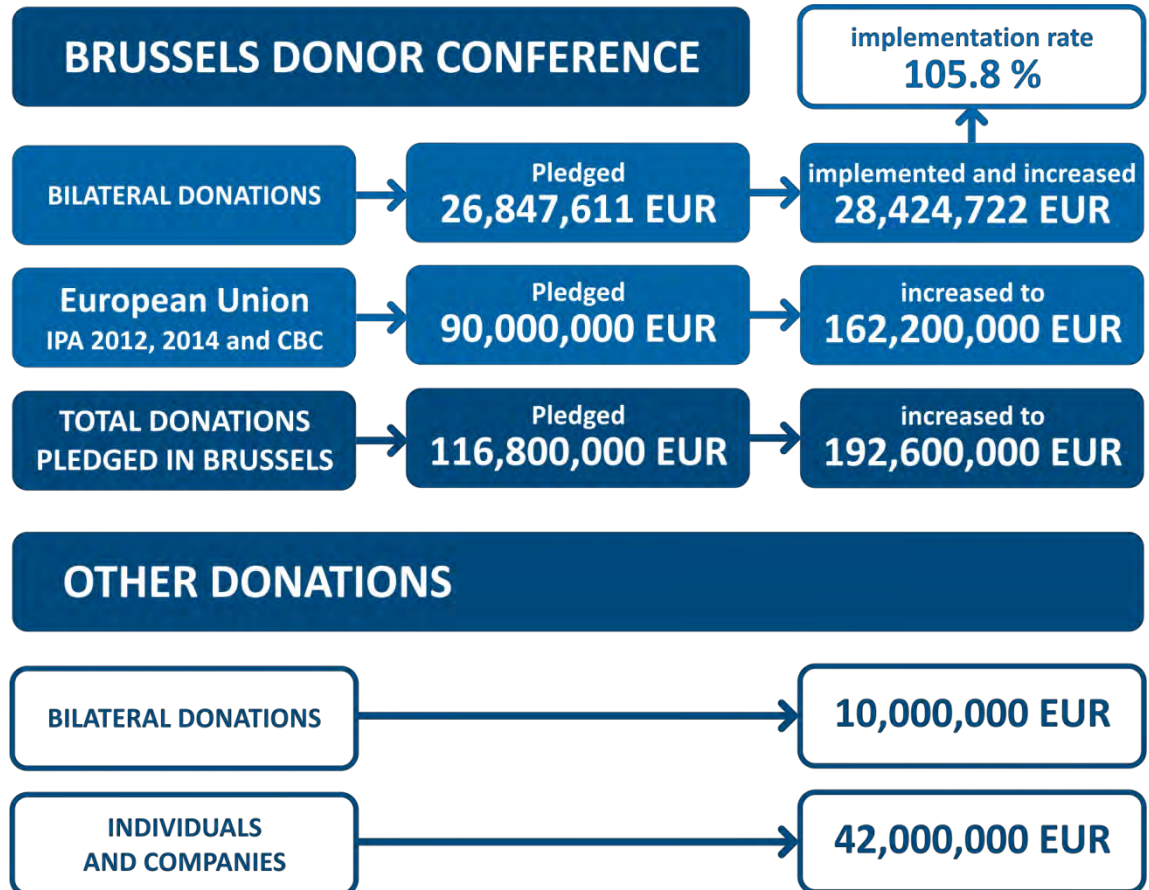
**Drafting a new set of rules,
law and bylaws**

FINANCIAL ASPECT OF RECOVERY



TOTAL FUNDS

**461.6 million
EUR**



SOLIDARITY FUND EU 60,200,000 EUR

RECOVERY PROCESS



Over the past years Serbia and its partners invested considerable resources into the recovery of:



DESTROYED AND
DAMAGED HOUSES



FLOOD PROTECTION
INFRASTRUCTURE



TRANSPORT
INFRASTRUCTURE



PUBLIC BUILDINGS



POWER PRODUCTION
AND DISTRIBUTION
FACILITIES



CRITICAL LOCAL
INFRASTRUCTURE

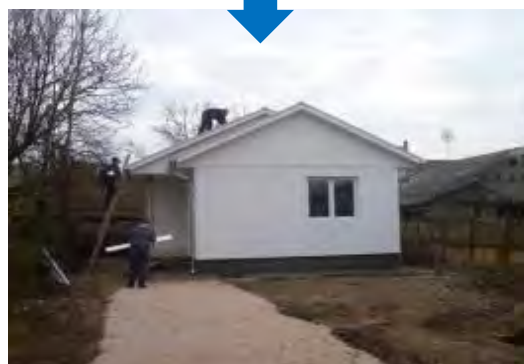


AGRICULTURE



SMEs

RESILIENT RECONSTRUCTION - HOUSES



266 houses newly built

All newly-built houses retrofitted, built on risk-informed principle and situated outside of flood risk zones and landslides.

PUBLIC BUILDINGS



Elementary school Kalinovac - UB



Health center Divci – Valjevo



High school Svilajnac


- **119 public buildings** in **23 municipalities** fully reconstructed or newly built
 - **59** from Solidarity Fund EU
 - **18** from IPA
 - **23** from NOR
 - **19** from other donators
-
- The value of works **from EUSF** has exceeded **€5.7 million** (out of €12 million)
-
- Resilient to floods
-
- Energy efficiency – energy passport

HEALTH CENTAR "BEGALJICA" BEFORE



HEALTH CENTAR "BEGALJICA" BEFORE





Health Centar
Grocka Begaljica
Invested:
€86,539

HEALTH CENTAR "BEGALJICA" AFTER RECONSTRUCTION



RESILIENT RECONSTRUCTION OF TRANSPORT INFRASTRUCTURE – BUILDING BACK BETTER



RESILIENT RECONSTRUCTION – TRANSPORT AND LOCAL INFRASTRUCTURE



109 critical infrastructure projects

of reconstruction and retrofitting in 39 municipalities: transport infrastructure, preventive infrastructure, water supply and sewage

LOCAL INFRASTRUCTURE - BRIDGES BEFORE



BEFORE

- Striking examples of risk-creating infrastructure
- Massive implementation of standard projects for bridges (cookie-cutter design)
- Bridges constructed without hydrologic and geotechnical surveys

LOCAL INFRASTRUCTURE - BRIDGES NOW



Construction of
57 completely
new bridges



← **5 - 60** →
meters long

on the territory of
35 local
self-governments.



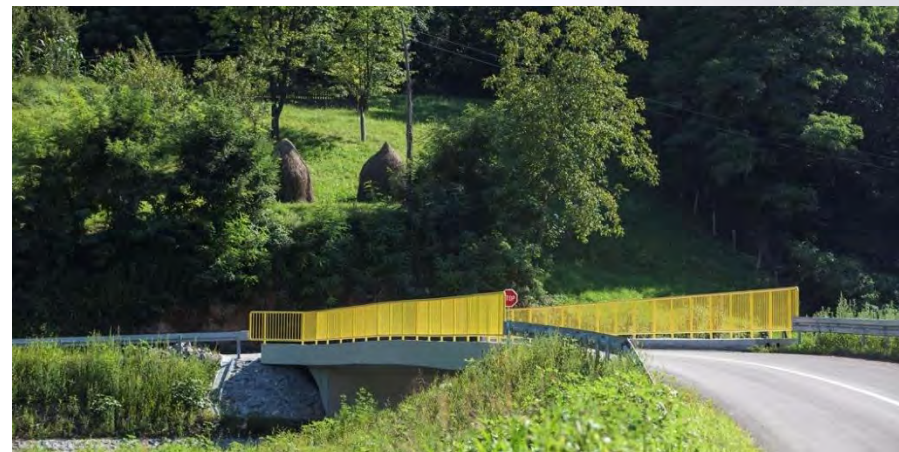
AFTER

- For every bridge constructed, a project is prepared with the participation of all relevant experts
- Risk-informed construction
- Hydrologic and geotechnical surveys

RECONSTRUCTED BRIDGES



Bridge at Lipnica River - Mionica



Bridge at Likodra River - Krupanj



Bridge 26.September - Krupanj



Bridge at Jasenica River – Topola

PREVENTIVE INFRASTRUCTURE



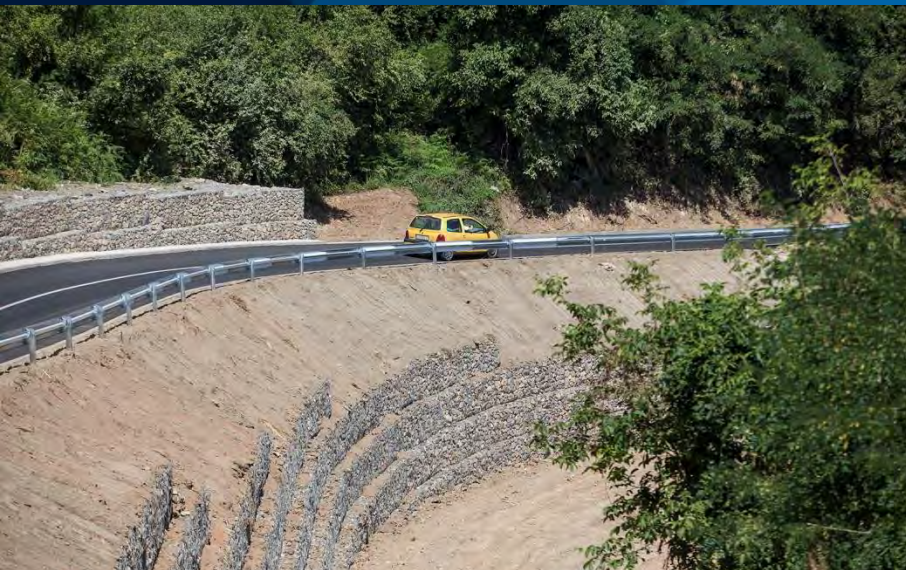
Novi Pazar before reconstruction



Novi Pazar after reconstruction

- **Reconstruction of more than 300 locations of preventive infrastructure (more than 200 from EU)**
- **More than €16 million from Solidarity Fund**
- **Preventive infrastructure designed accordingly to new high water levels (2014)**

INFRASTRUCTURE



Road "Korenita – Krupanj"



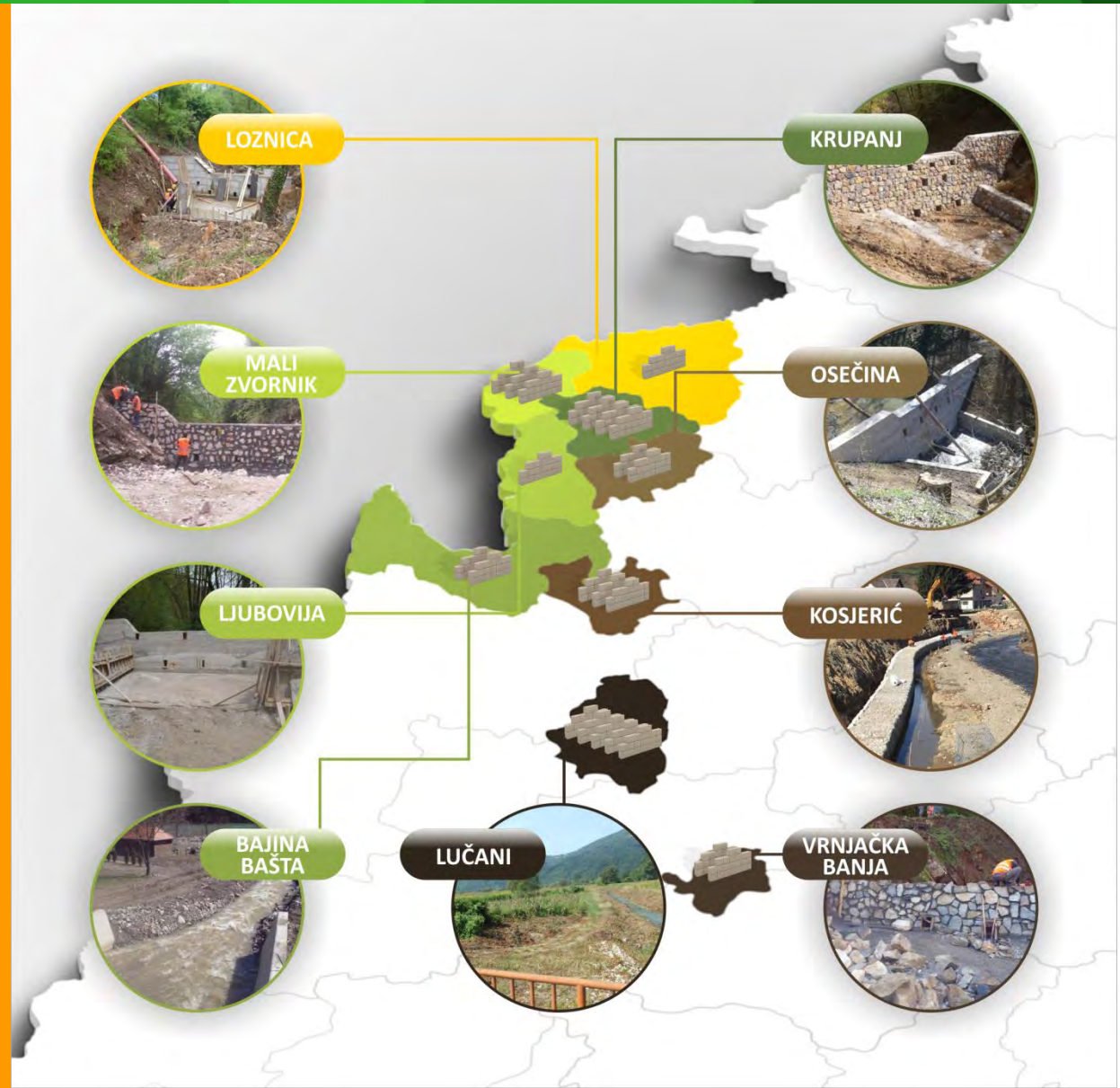
- Reconstruction and improvement of **flood prevention infrastructure** by building and reconstructing **over 300 structures**
- **23 reconstruction and improvement projects for sewerage** and water supply systems in 12 LSGs
- Rehabilitation of **27 landslides** in 15 LSGs
- **19 projects** to regulate local **watercourses** in 13 LSGs
- **11 projects** to reconstruct **local roads**
- Reconstruction of **80 bridges** in 35 LSGs

CONSTRUCTION OF TORRENTIAL DAMS



29
NEW
TORRENTIAL
DAMS

constructed in
2015



DRR & DRM INNOVATIONS



Law on Disaster Recovery

Disaster Risk Reduction and
Emergency Management Law

- **New legislative framework developed with support of EU, UN and WB based on international standards Sendai Framework and lessons learned**
- **Systemic approach to the DRM: prevention-response-reconstruction**
- **Created with high participation among all stakeholder (relevant ministries, special organizations, municipalities, NGO's)**

***Serbia aims to be the one of the first countries in the world with legislation fully aligned with Sendai Framework**

www.pim.gov.rs
www.obnova.gov.rs

A photograph of a construction site for a riverbank reinforcement. In the foreground, a river flows through a channel lined with large, light-colored stones. The background shows a dirt embankment where a white excavator is working, and a person is standing nearby. The sky is overcast and the overall scene is in a muted, blue-toned color palette.

THANK YOU

sandra.nedeljkovic@obnova.gov.rs